

HIGH_END_SOLUTION_WITHOUT_COMPROMISE



LITHIUM_ION_POWER
MADE IN GERMANY!



LITHIUM POWER TOOL SYSTEM_II - PREMIUM
SOLUTION WITHOUT COMPROMISE !



ADVANTAGES

1. **Slim design especially for smaller hands**
2. **Improved handling: Lock button (middle position)**
3. **New sealing technology: no spray adapters necessary – no oiling of internal shaft required**
4. **New closing mechanism for the Powerpack: 1hand closing**
5. **Improved surface treatment for better grip**
6. **Better stability/ steadiness with large tools attached due to tilted design**
7. **1 handpiece for both reciprocating and sternum saw**
8. **The overall concept: 1 Powerpack used for all 5 machines**

POWERPACK ADVANTAGES AND DESCRIPTION

Intelligent PowerPack software with automatic power source recognition

Integrated PowerPack LED display shows the current battery status and providing illumination of the operating field

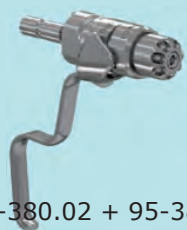
PowerPack units with high power capacity and power source supply , durability, versatility and efficiency without memory effect and integrated overheat modus



**LITHIUM_ION_POWER
MADE IN GERMANY!**



95-380.10
Spickdrahtfutter (K-Draht)
D. = 1,00mm bis 4,00 mm
(für Bohr- und Fräsmaschine
95-380.02 + 95-381.02)
Wire / pin driver (K-wire)
D. = 1,00mm bis 4,00 mm
(for drill- and reaming machine 95-380.02 + 95-381.02)



95-380.11
Spickdrahtfutter (K-Draht) D. = 1,00mm bis
4,00 mm
(für Bohrmaschine
95-380.01 + 95-381.01)
Wire / pin driver (K-wire) D. = 1,00mm bis
4,00 mm
(for drilling machine 95-380.01 + 95-381.01)



95-380.21
Röhm - Bohrfutter
(max. D. = 7,0 mm)
Röhm - three jaw chuck
(max. Dia. = 7.0 mm)



95-380.12
Verlängerung für
Spickdrahtfutter (durchbohrt)
Extension guide
for wire / pin driver (cannulated)



95-380.22
Jakobs - Bohrfutter, klein
(max. D. = 4,0 mm)
Jakobs - chuck, small
(max. Dia. = 4.0mm)



95-380.13
Adapter für
Röntgenstrahldurchlässiges
Winkelgetriebe
Adapter
for radiolucent drill guide



95-380.23
Jakobs - Bohrfutter, groß
(max. D. = 6,5 mm)
Jakobs - chuck, large
(max. Dia. = 6.5 mm)



95-380.18
Aufsatz AO klein
Adapter AO small



95-380.24
Schnellspannfutter
mit Arretierung
(max. D. = 6,5 mm)
Quick action chuck
with ratchet
(max. Dia. = 6.5 mm)



95-380.14
Aufsatz AO groß
Adapter AO big



95-380.25
Schnellspannfutter
ohne Arretierung
(max. D. = 6,0 mm)
Quick action chuck
without ratchet
(max. Dia. = 6.0 mm)



95-380.16
Adapter für
Hudson Aufsatz
Adapter for
Hudson Chuck



95-380.26
Albrecht Schnellspannfutter
ohne Arretierung,
klein (max. D. = 3,5 mm)
Albrecht quick action chuck
without ratchet,
small (max. Dia. = 3.5 mm)



95-380.17
Adapter für
Harris Aufsatz
Adapter for
Harris Chuck



Bohr- / Fräser Handstück

Drill / reamer handpiece



95-381.02

BOHR-/ FRÄSMASCHINE

- Zwei Geschwindigkeitsbereiche (Bohren max. 1000 U/min – Fräsen max. 250 U/min)
- Kanülierung: max. 4,2 mm
- Vorwärts- / Rückwärtslauf / Lock-Position
- Geeignet für zahlreiche Bohr- / Fräsfutter
- Umschaltbar auf oszillierenden Modus

BATTERY DRILL / REAMING MACHINE

- Can be operated with two speed ranges (Drilling max. 1000 r/pm – Reaming max. 250 r/pm)
- Cannulization: max. 4,2 mm
- Forward / reverse modus / Lock-position
- Suitable for drilling / milling attachments
- Switchable to oscillating modus

PERÇEUSE à BATTERIE – FRAISAGE

- Peut être utilisé en deux vitesses (Perçage à max. 1000 t/min & Fraisage à max. 250 t/ min)
- Mechage max. 4,2 mm
- Marche en mode Droite/Gauche
- Position fermer off
- Recommander pour tout mandrin perçage & fraisage
- Interchangeable en mode scie sagittale



95-381.01

BOHRMASCHINE UNIVERSAL

- Bohren max. 1000 U/min
- Kanülierung: max. 4,2 mm
- Vorwärts- / Rückwärtslauf / Lock-Position
- Geeignet für alle Bohraufsätze
- Kirschner-Schnellkupplung-Spickdrahtfutter
- Umschaltbar auf oszillierenden Modus

BATTERY DRILL – UNIVERSAL

- Drilling max. 1000 r/pm
- Cannulization: max. 4,2 mm
- Forward / reverse modus / Lock-position
- Suitable for all drill-attachments
- Kirschner quick-coupling & extension connector
- Switchable to oscillating modus

PERÇEUSE À BATTERIE - UNIVERSEL

- Perçage à max. 1000 t/min
- Mechage max. 4,2 mm
- Marche en mode Droite/Gauche - Position fermer off
- Recommander pour tout mandrin perçage
- Extensible en passe broche de Kirschner à verrouillage rapide
- Interchangeable en mode scie sagittale



95-381.03

🇩🇪 SAGITTAL, OSZILLIRENDE SÄGE, 4°

- Zwei Geschwindigkeitsbereiche / Lock-Position
- Sägeblätter mit **SYNTHES** Anschluss
- Werkzeugloser Schnellspann-Verschluss
- Sägeblätter können in 5 Positionen eingelegt werden

🇬🇧 SAGITTAL, OSCILLATING SAW, 4°

- Two speed ranges / Lock-position
- Saw blades with **SYNTHES** attachment
- Tool-free quick-action
- Saw blade can be inserted in 5 different positions

🇫🇷 SCIE SAGITTALE, OSCILLATEUR, 4°

- Peut etre utilisé à deux vitesses
- Position fermer off
- Lame pour scie, mandrin **SYNTHES**
- Mandrin à Verouillage rapide sans clef
- Lame pour scie peut etre inserer en 05 positions differentes



95-381.04

🇩🇪 OSZILLIERENDE FRÄSMASCHINE (ACL)

- Zwei Geschwindigkeitsbereiche / Lock-Position
- Werkzeugloser Schnellspann-Verschluss

🇬🇧 OSCILLATING REAMING MACHINE (ACL)

- Two speed ranges / Lock-position
- Tool-free quick-action

🇫🇷 LA FRAISEUSE MACHINE - OSCILLATEUR (ACL)

- Peut etre utilisé à deux vitesses
- Mandrin à Verouillage rapide sans clef



95-381.05

🇩🇪 STERNUM - STICHSÄGE

- Zwei Geschwindigkeitsbereiche / Lock-Funktion
- STRYKER** Anschluss, geeignet für „Kühlflüssigkeiten“
- Werkzeugloses Einspannen, sehr präzise Schnitte
- Ersatzsägeblatt Art. Nr.: 14332/0,8

🇬🇧 STERNUM - RECIPROCATING SAW

- Two speed ranges / Lock-position
- STRYKER** attachment, Suitable for use with cooling
- liquid Tool-free tensioning, Precise cuts and smooth control
- Replacement saw blade Ref. No.: 14332/0,8

🇫🇷 SCIE POUR STERNUM SCIE RÉCIPROQUE

- Peut etre utilisé en deux vitesses
- Position fermer off
- Lame pour scie, mandrin **STRYKER**
- Serrage sans clef, coupe précise et controler
- Lame de rechange Ref. No.: 14332/0,8

95-380.50
Steriltrichter
für PowerPack



Sterile funnel
for PowerPack



95-380.35 **Ladegerät**
(1 x Ladeschacht mit Länder - Ladekabel)

Charger
(1 x charging slot with country powercables)



95-380.36 **Ladegerät**
(2 x Ladeschacht mit Länder - Ladekabel)

Charger
(2 x charging slots with country powercables)



95-380.37 **Ladegerät**
(4 x Ladeschacht mit Länder - Ladekabel)

Charger
(4 x charging slots with country powercables)

95-380.40
Kabel für Ladegerät
(EU standard)



Cable for charging unit
(EU standard)

95-380.42
Kabel für Ladegerät
(UK standard)



Cable for charging unit
(UK standard)

95-380.39
Kabel für Ladegerät
(US standard)



Cable for charging unit
(US standard)

95-380.41
Kabel für Ladegerät
(AU standard)



Cable for charging unit
(AU standard)

95-380.38
POAG Kabel für Ladegerät



POAG Cable for charging unit

Li-Ion Akku Powersystem für alle Handstücke Li-Ion-Akku Power System for all handpieces

Universal PowerPack

passend / anwendbar für alle Maschinen.
"Motor + Elektronik + Software + Batterie"
= integriert in einer Komponente

Intelligente PowerPack Software inkl. automatischer
Energieleistungserkennung und deren Energieabgabe

PowerPack mit integrierter LED Display
= aktueller Ladestatus der Batterie
= erzeugt zusätzlich ein beleuchtetes OP-Arbeitsfeld

Hohe Energiekapazität und Abgabeleistung,
langlebig, vielseitig und integrierter Überhitzungsschutz

Ergonomisches Design

LITHIUM IONEN AKKU POWER

PowerPack universel

Accessoires / utilisable pour tous les Moteurs
Moteur + Plaque électronique + Logiciel + Batterie
= sont tous intégrer dans une composante

Le logiciel PowerPack intelligent
Unclu système de reconnaissance
de charge électrique

Affichage Intégré PowerPack LED
= état de charge de le batterie instantané
= témoin de la Charge électrique

Puissance à Grande capacité
et chargement rapide
Resistance, universalité
et système surchauffe intégré
Nettoyage innovateur et concept retaiter
(Container de Sterilisation, panier
en acier inoxydable inclu kit de rinçage)

Moteur à Design Ergonomique

BATTERIE au LITHIUM-IONS

95-380.30
PowerPack
(Lithium Ionen Akku)

PowerPack
(lithium Ionen battery)

PowerPack
(Batterie aus Lithium-Ions)



Universal PowerPack

fitting / usable for to all machines.
"motor + electronic board + software + battery"
= integrated in one component

Intelligent PowerPack Software
incl. automatic power source recognition

Inregrated PowerPack LED display
= shows current battery status
= providing illumination of the operating field

High power capacity and power source supply
Durability, versatility and integrated overheat modus

Ergonomic machine design

LITHIUM IONEN BATTERIE POWER

95-380.51

Schmierständer für Wartung

Lubrication service frame



95-380.62

Sprühadapter vorne

(für Sägen 95-380.04 / 95-380.05 / 95-381.05)

Up front (anterior) spray adapter

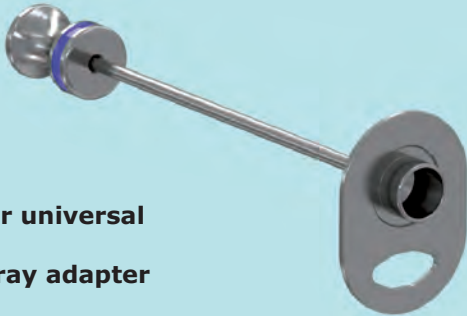
(for saws 95-380.04 / 95-380.05 / 95-381.05)



95-380.61

Sprühadapter universal

Universal spray adapter



95-380.56

Spüladapter universal

Universal rinse adapter



95-380.59

Sprühadapter für Bohrmaschinen

(für 95-380.01 / 95-381.01 / 95-380.02 / 95-381.02)

Spray adapter for drilling machines

(for 95-380.01 / 95-381.01 / 95-380.02 / 95-381.02)



95-380.57

Spüladapter

für Bohr- und Fräsmaschine

(für 95-380.01 / 95-381.01 / 95-380.02 / 95-381.02)

Rinse adapter

for drilling and reaming machine

(for 95-380.01 / 95-381.01 / 95-380.02 / 95-381.01)



95-380.60

Sprühadapter für Sägen

(für 95-380.03 / 95-381.03 / 95-380.04 / 95-380.05 / 95-381.05)

Spray adapter for saws

(for 95-380.03 / 95-381.03 / 95-380.04 / 95-380.05 / 95-381.05)



95-380.58

Spüladapter

für Stich- und Sternumsäge

(für 95-380.04 / 95-380.05 / 95-381.05)

Rinse adapter

for sternum- and reciprocator saw

(for 95-380.04 / 95-380.05 / 95-381.05)



95-380.55

Spülset

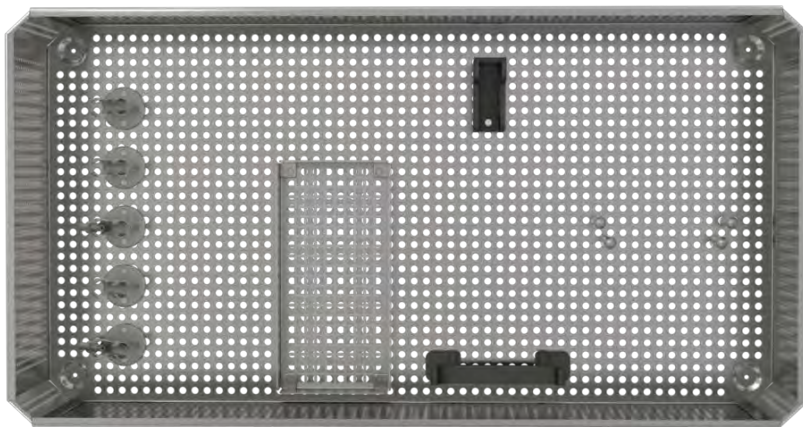
Rinsing Set



95-380.63

Reinigungsbürsten Set

Cleaning brush set



95-380.52 **Siebkorb mit Deckel**
Tray with Lid for one PowerTool Handpiece

95-380.522 **Siebkorb mit Deckel**
Tray with Lid for two PowerTool Handpiece

95-380.53 **Siebkorb, einzeln**
Tray, only

95-380.54
Deckel, einzeln
Lid, only



150

Outside
580 x 280 x 150 mm







Container
Bottom non-perforated
Lid perforated



Front



Back

-  60-500.15
-  60-500.15Y
-  60-500.15R
-  60-500.15B
-  60-500.15G
-  60-500.15S

Technische Daten / Leistungsangaben

Technical data / Device
Specifications





Gewicht Handstück (ohne Akku)
Gewicht Handstück (mit Akku)

Drehzahl
Regulierung
Kanülierung
Vorwärts- / Rückwärtslauf
Lock-Position / Sperrmechanismus
Anschluss / Sägeblatt
Geräuschpegel
Energiezufuhr

95-381.02
Bohr- / Fräsmaschine

1090 g
 1850 g
 0 - 1000 U/min (Modus Drill)
 0 - 250 U/min (Modus Ream)
 Stufenlos
 Max. Ø 4,3 mm
 ✓
 ✓
 n.z.
 65 db
 Interner Akku (Li-ion)

95-381.01
Bohrmaschine Universal

900 g
 1660 g
 0 - 1000 U/min
 Stufenlos
 Max. Ø 4,3 mm
 ✓
 ✓
 n.z.
 65 db
 Interner Akku (Li-ion)

95-381.03 Sagittal, Oszillierende Säge, 4°

1000 g
 1760 g
 0 - 9000 U/min (Stufe I)
 0 - 11000 U/min (Stufe II)
 Stufenlos
 n.z.
 n.z.
 ✓
 SYNTHES
 65 db
 Interner Akku (Li-ion)

95-381.04
Oszillierende Fräsmaschine (ACL)

790 g
 1550 g
 0 - 9000 U/min (Stufe I)
 0 - 11000 U/min (Stufe II)
 Stufenlos
 n.z.
 n.z.
 ✓
 STRYKER
 65 db
 Interner Akku (Li-ion)

95-381.05
Sternum - Stichsäge

990 g
 1750 g
 0 - 7500 U/min (Stufe I)
 0 - 10000 U/min (Stufe II)
 Stufenlos
 n.z.
 n.z.
 ✓
 STRYKER
 65 db
 Interner Akku (Li-ion)



Weight handpiece (without battery)
Weight handpiece (incl. battery)

Rotation speed
Regulation
Cannulization
Forward- / reverse modus
Lock-position / safety stop
Saw blade attachment
Noise level
Energy input

95-381.02
Battery Drill / Reamer

1090 g
 1850 g
 0 - 1000 r/pm (Modus Drill)
 0 - 250 r/pm (Modus Ream)
 Stepless
 Max. Ø 4,3 mm
 ✓
 ✓
 n.a.
 65 db
 Internal battery (Li-ion)

95-381.01
Battery Drill - universal

900 g
 1660 g
 0 - 1000 r/pm
 Stepless
 Max. Ø 4,3 mm
 ✓
 ✓
 n.a.
 65 db
 Internal battery (Li-ion)

95-381.03 Sagittal, Oscillating, Saw, 4°

1000 g
 1760 g
 0 - 9000 r/pm (Level I)
 0 - 11000 r/pm (Level II)
 Stepless
 n.a.
 n.a.
 ✓
 SYNTHES
 65 db
 Internal battery (Li-ion)

95-381.04
Oscillating Reaming Machine (ACL)

790 g
 1550 g
 0 - 9000 r/pm (Level I)
 0 - 11000 r/pm (Level II)
 Stepless
 n.a.
 n.a.
 ✓
 STRYKER
 65 db
 Internal battery (Li-ion)

95-381.05
Sternum-Reciprocating Saw

990 g
 1750 g
 0 - 7500 r/pm (Level I)
 0 - 10000 r/pm (Level II)
 Stepless
 n.a.
 n.a.
 ✓
 STRYKER
 65 db
 Internal battery (Li-ion)



Poids pièce à main (sans batterie)
Poids pièce à main (avec batterie)

Nombre de tours
Réglementation
Canulation
Course en avant / cours en arrière
Position Lock / mécanisme de verrouillage
Raccordement / Sawblade
Bruit
Source de courant

95-381.02
Perceuse à batterie - alesage

1090 g
 1850 g
 0 - 1000 t/min (Modus Drill)
 0 - 250 t/min (Modus Ream)
 Stepless
 Max. Ø 4,3 mm
 ✓
 ✓
 n.a.
 65 db
 Chargeur interne (Li-ion)

95-381.01
Perceuse à batterie - universel

900 g
 1660 g
 0 - 1000 t/min
 Stepless
 Max. Ø 4,3 mm
 ✓
 ✓
 n.a.
 65 db
 Chargeur interne (Li-ion)

95-381.03 Scie Sagittale, Oscillateur, 4°

1000 g
 1760 g
 0 - 9000 t/min (Level I)
 0 - 11000 t/min (Level II)
 Stepless
 n.a.
 n.a.
 ✓
 SYNTHES
 65 db
 Chargeur interne (Li-ion)

95-381.04
La Fraiseuse Machine - Oscillateur (ACL)

790 g
 1550 g
 0 - 9000 t/min (Level I)
 0 - 11000 t/min (Level II)
 Stepless
 n.a.
 n.a.
 ✓
 STRYKER
 65 db
 Chargeur interne (Li-ion)

95-381.05
Scie pour Sternum

990 g
 1750 g
 0 - 7500 t/min (Level I)
 0 - 10000 t/min (Level II)
 Stepless
 n.a.
 n.a.
 ✓
 STRYKER
 65 db
 Chargeur interne (Li-ion)



95-380.30

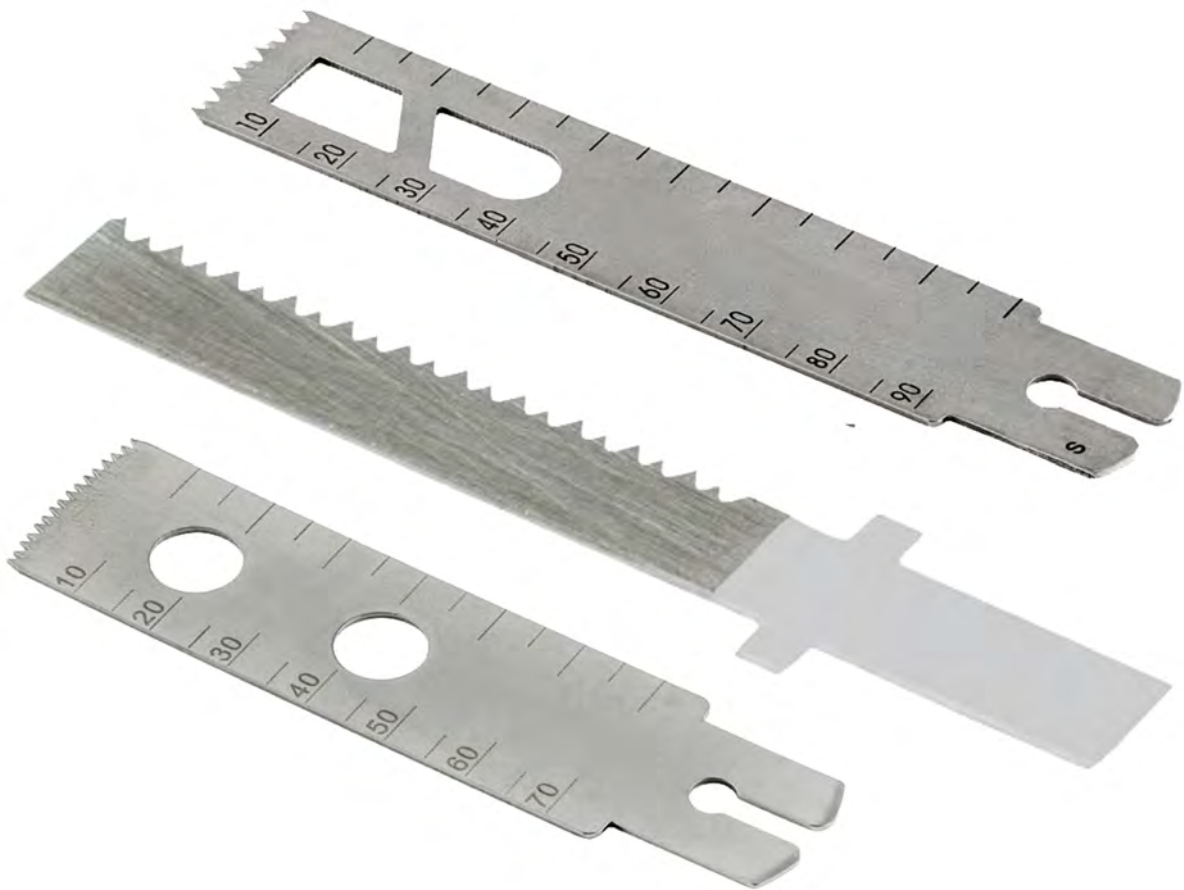
	PowerPack		PowerPack		PowerPack
Typ	Lithium Akku	Type	Lithium Battery	Type	Lithium Batterie
Gewicht	760 g	Weight	760 g	Poids	760 g
Ladespannung	Max. 16,8 V	Charging voltage	Max. 16,8 V	Voltage de charge	Max. 16,8 V
Nennspannung	14,4–16,8 V	Rated voltage	14,4–16,8 V	Tension nominal	14,4–16,8 V
Nennkapazität	2,1 Ah	Rated capacity	2,1 Ah	Capacité nominale	2,1 Ah
LED Display	✓	LED Display	✓	Ecran LED	✓
Ladezeit	< 90 min	Charging time	< 90 min	Temps de charge	< 90 min

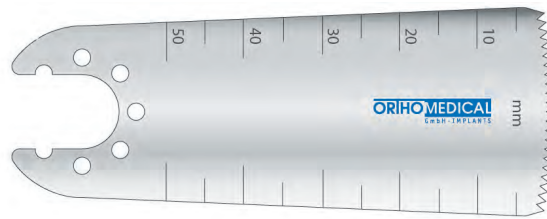


	95-380.35 Ladegerät	95-380.36 Ladegerät	95-380.37 Ladegerät
Typ	1x Ladeschacht	2x Ladeschacht	4x Ladeschacht
Gewicht	1740 g	3480 g	6960 g
Nennspannung	100 - 240 V	100 - 240 V	100 - 240 V
Nennfrequenz	50 - 60 Hz	50 - 60 Hz	50 - 60 Hz
Abmessung	157x140x79 mm	314x140x79 mm	636x140x79 mm
LED Display	✓	✓	✓
POAG Anschluss	✓	✓	✓
	95-380.35 Charger	95-380.36 Charger	95-380.37 Charger
Type	1x charging slot	2x charging slots	4x charging slots
Weight	1740 g	3480 g	6960 g
Rated voltage	100 - 240 V	100 - 240 V	100 - 240 V
Rated frequency	50 - 60 Hz	50 - 60 Hz	50 - 60 Hz
Dimensions	157x140x79 mm	314x140x79 mm	636x140x79 mm
LED Display	✓	✓	✓
POAG connection	✓	✓	✓
	95-380.35 Chargeur	95-380.36 Chargeur	95-380.37 Chargeur
Type	1x Fente de Chargement	2x Fente de Chargement	4x Fente de Chargement
Poids	1740 g	3480 g	6960 g
Tension nominale	100 - 240 V	100 - 240 V	100 - 240 V
Fréquence nominale	50 - 60 Hz	50 - 60 Hz	50 - 60 Hz
Dimension	157x140x79 mm	314x140x79 mm	636x140x79 mm
Écran LED	✓	✓	✓
Raccordement POAG	✓	✓	✓

**Sägeblätter / Bohrer /
Kirschner Bohrdrähte**

Saw blades / Drills /
Kirschner wires

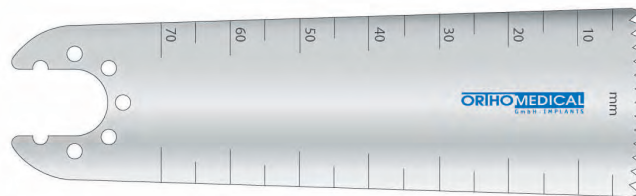




Cat. No.	Blade Thickness	Cut Thickness	Tooth Pitch mm (TPI)	Useable Length	Blade Width
95-349.60	0.4	0.65	1.3 (20)	50	27



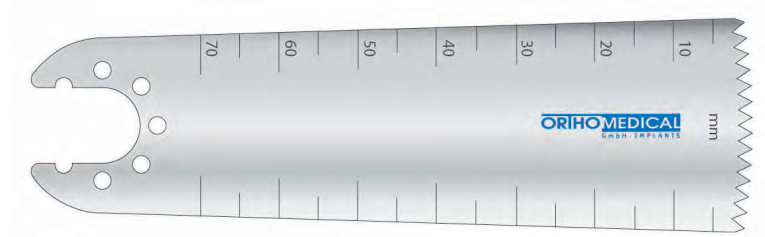
Cat. No.	Blade Thickness	Cut Thickness	Tooth Pitch mm (TPI)	Useable Length	Blade Width
95-349.61	0.4	0.65	1.3 (20)	50	14



Cat. No.	Blade Thickness	Cut Thickness	Tooth Pitch mm (TPI)	Useable Length	Blade Width
95-349.62	0.6	0.8	1.9 (20)	71	27



Cat. No.	Blade Thickness	Cut Thickness	Tooth Pitch mm (TPI)	Useable Length	Blade Width
95-349.63	0.6	0.8	1.9 (13)	71	50



Cat. No.	Blade Thickness	Cut Thickness	Tooth Pitch mm (TPI)	Useable Length	Blade Width
95-349.64	0.8	1.0	1.9 (13)	71	27



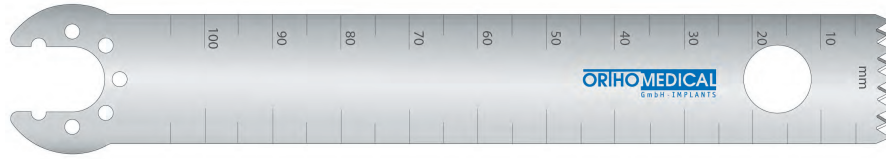
Cat. No.	Blade Thickness	Cut Thickness	Tooth Pitch mm (TPI)	Useable Length	Blade Width
95-349.73	1.0	1.2	1.3 (13)	71	27



Cat. No.	Blade Thickness	Cut Thickness	Tooth Pitch mm (TPI)	Useable Length	Blade Width
95-349.66	0.4	0.65	1.2 (22)	27	6



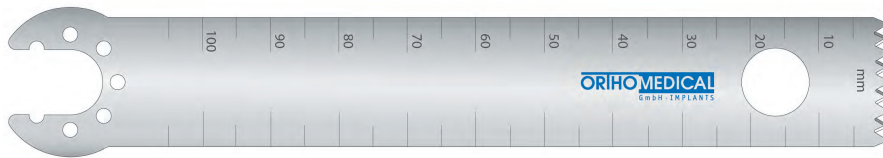
Cat. No.	Blade Thickness	Cut Thickness	Tooth Pitch mm (TPI)	Useable Length	Blade Width
95-349.67	0.4	0.65	1.2 (22)	27	14



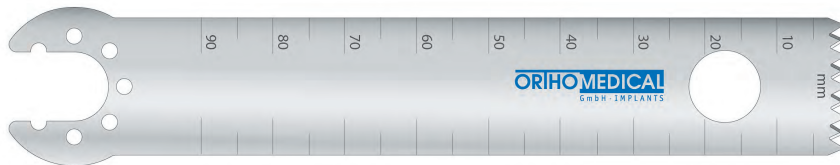
Cat. No.	Blade Thickness	Cut Thickness	Tooth Pitch mm (TPI)	Useable Length	Blade Width
95-349.70	1.2	1.3	2.1 (12)	105	19



Cat. No.	Blade Thickness	Cut Thickness	Tooth Pitch mm (TPI)	Useable Length	Blade Width
95-349.69	0.9	1.0	1.5 (17)	90	22



Cat. No.	Blade Thickness	Cut Thickness	Tooth Pitch mm (TPI)	Useable Length	Blade Width
95-349.71	1.25	1.3	2.1 (12)	105	19



Cat. No.	Blade Thickness	Cut Thickness	Tooth Pitch mm (TPI)	Useable Length	Blade Width
95-349.72	1.0	1.0	2.1 (12)	90	19

Zähnegeschränkt / Teethcrossed

Artikelnr. Article-No.	14332/0,8
Nutzlänge DepthofCut	32,0 mm / 1.260 in
Dicke Thickness	0,8 mm / 0.031 in
Schnittstärke CuttingThickness	1,05 mm / 0.041 in

Artikelnr. Article-No.	14360/0,6
Nutzlänge DepthofCut	60,0 mm / 2.362 in
Dicke Thickness	0,6 mm / 0.024 in
Schnittstärke CuttingThickness	1,0 mm / 0.039 in

Artikelnr. Article-No.	14367/0,6
Nutzlänge DepthofCut	67,9 mm / 2.673 in
Dicke Thickness	0,6 mm / 0.024 in
Schnittstärke CuttingThickness	1,0 mm / 0.039 in

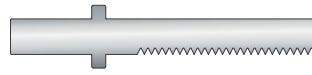
Artikelnr. Article-No.	14375/0,6
Nutzlänge DepthofCut	75,7 mm / 2.980 in
Dicke Thickness	0,6 mm / 0.024 in
Schnittstärke CuttingThickness	1,0 mm / 0.039 in

Artikelnr. Article-No.	14377/0,8
Nutzlänge DepthofCut	77,5 mm / 3.051 in
Dicke Thickness	0,8 mm / 0.031 in
Schnittstärke CuttingThickness	1,0 mm / 0.039 in

Ersatzsägeblatt für Sternum Säge

Replacement sawblade for Sternum saw

Stryker



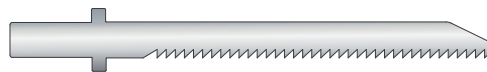
Für die folgenden Handstücke

For the following handpieces
95-380.05 / 95-381.05

Sägeblätter für Stichsäge

Sawblades for reciprocating saw

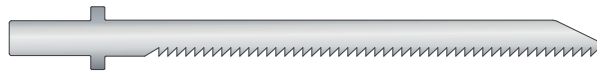
Stryker



Stryker



Stryker



Stryker

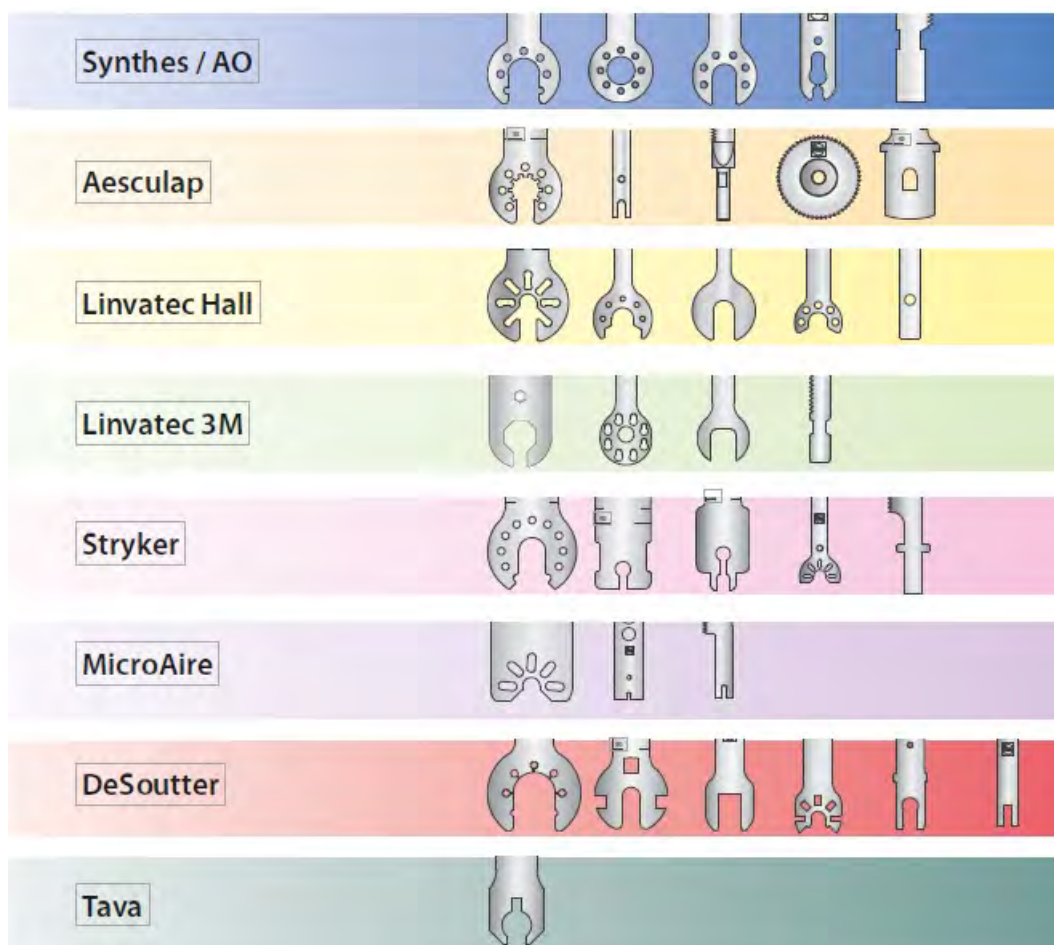


Für die folgenden Handstücke

For the following handpieces
95-380.04 / 95-381.05

Weitere Modelle auf Anfrage

Further models on request



ORIHOMEDICAL

G m b H · I M P L A N T S



Ortho-Medical GmbH | Hauptstrasse 5 | 78589 Dürbheim | Germany
Telefon +49 (74 24)94 03-40 | mail@orthomedical.de | www.orthomedical.de

Edition 2019|09 | Revision: 04.06.2020
Printed in Malaysia · Copyright by ORTHO-MEDICAL GmbH, Implants ·
We reserve the right to make alterations.